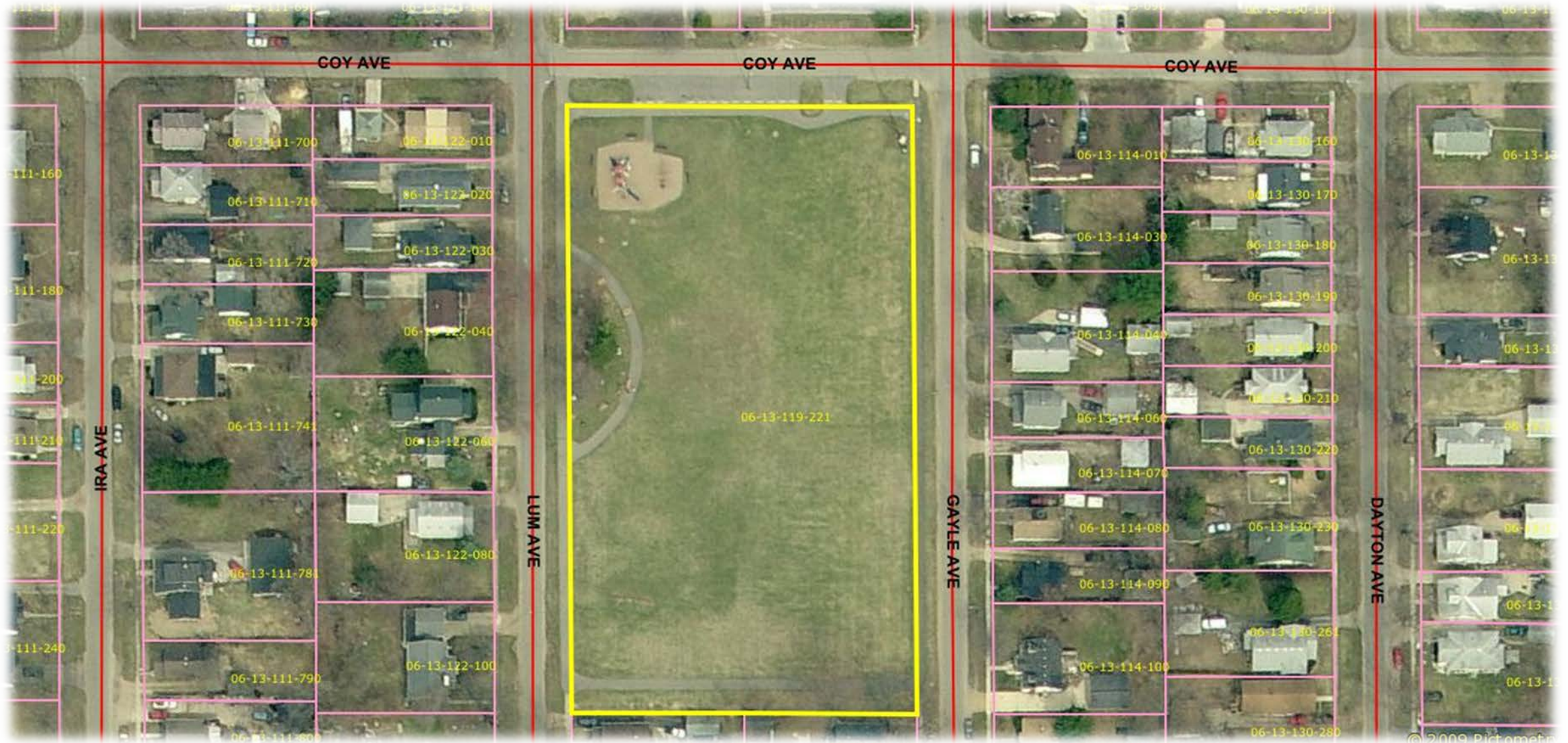


Wilson Park, 2620 Coy



Eastwood Wilson Park

The 2.5 acre site contains a large, mowed field, a paved walking path along the perimeter, playground equipment designed for young children, benches, and parking. The land was formerly a neighborhood school named Wilson School. The parcel is located in the heart of Kalamazoo Township's Eastwood neighborhood, near the Eastwood library branch, the Eastwood Fire Station, churches, a grocery store and other businesses.

